



2018 ICSA National Singlehanded  
Championship Bid  
Hope College and Grand Valley State University



ICSA Board,

The Hope College Sailing Team and Grand Valley State University Club Sailing hereby bids to host the 2018 ICSA National Singlehanded Championship the weekend of November 3-4, 2018. We propose to host the event at the Macatawa Bay Yacht Club in Holland, Michigan. Hope College has hosted an annual regatta for nearly twenty years, and partnered with GVSU, hosted the MCSA Fall Championships in 2016. The Macatawa Bay Yacht Club members and staff have experience hosting championship regattas, annually hosting the USA Junior Olympic Sailing Festival - Michigan Championship as well as US Sailing regional Laser qualifiers and VX One Nationals the summer of 2016. The relationship and resources provided by the two college teams and the Macatawa Bay Yacht Club will produce a competitive and professional regatta.

We believe that the MBYC is one of the best venues in the Midwest, especially for Laser sailing. Unlike many sailing centers, ours offers the opportunity to tow out to Lake Michigan for great offshore sailing, or remain in Lake Macatawa if weather conditions prove unstable. This allows flexibility. MBYC allows boats to be stored on dollies in the parking lot during the regatta, which makes unloading and loading boats onto trailers more efficient. Launching is easy with two ramps and a boat launch. Please take into account the following qualities of our venue and find attached pictures below.

1. Venue

- a. Name and Location: Macatawa Bay Yacht Club and Macatawa Bay Junior Association, 2157 S Shore Dr, Holland, MI 49423
- b. Launching: Multiple ramps and a boat launch, as well as floating docks, allow for easy and efficient launching from the parking lot.
- c. Shelter: The Macatawa Bay Junior Association is an enclosed facility with classrooms, as well as heated bathrooms and showers.
- d. Viewing: If races are run on Lake Macatawa, the Macatawa Bay Yacht Club has outdoor benches as well as a bar that overlook the lake. Viewing races on Lake Michigan is possible from the pier. Spectator boats will also be made available to coaches and parents.
- e. Rotations: As this is a singlehanded regatta, no rotations will occur.
- f. Racing area: Either Lake Michigan or Lake Macatawa, depending on the conditions.

## 2. Boats

- a. Sailboats: Boats will be provided by Laser Performance. Men will sail Laser full rigs and women will sail Laser Radials.
- b. Motor Boats: MBJA has a fleet of eight powerboats, including Zodiacs and Boston Whalers.

## 3. Housing

- a. The MBYC is about 15 minutes from downtown Holland. Multiple hotels are located in and around downtown and multiple different price points. Hotels are also available along Route 31. Group discounts are a possibility.
  - i. Haworth Inn at Hope College  
225 College Ave, Holland, MI 49423  
616) 395-7200  
\$129 per night
  - ii. CityFlatsHotel  
61 E 7th St, Holland, MI 49423  
(616) 796-2100  
\$149 per night
  - iii. Courtyard Marriott Holland Downtown  
121 E 8th St, Holland, MI 49423  
(616) 582-8500  
\$169 per night
  - iv. Country Inn and Suites  
12260 James Street, Holland, MI 49424  
(616) 396-6677  
\$85 per night
  - v. Many other options in the 10-15 mile radius.
- b. Housing is also available for students primarily in Holland with Hope College students or in Allendale or Grand Rapids with GVSU students. Hope College housing is approximately 15 minutes away from the sailing center. GVSU housing is 20-30 minutes away.

## 4. Travel

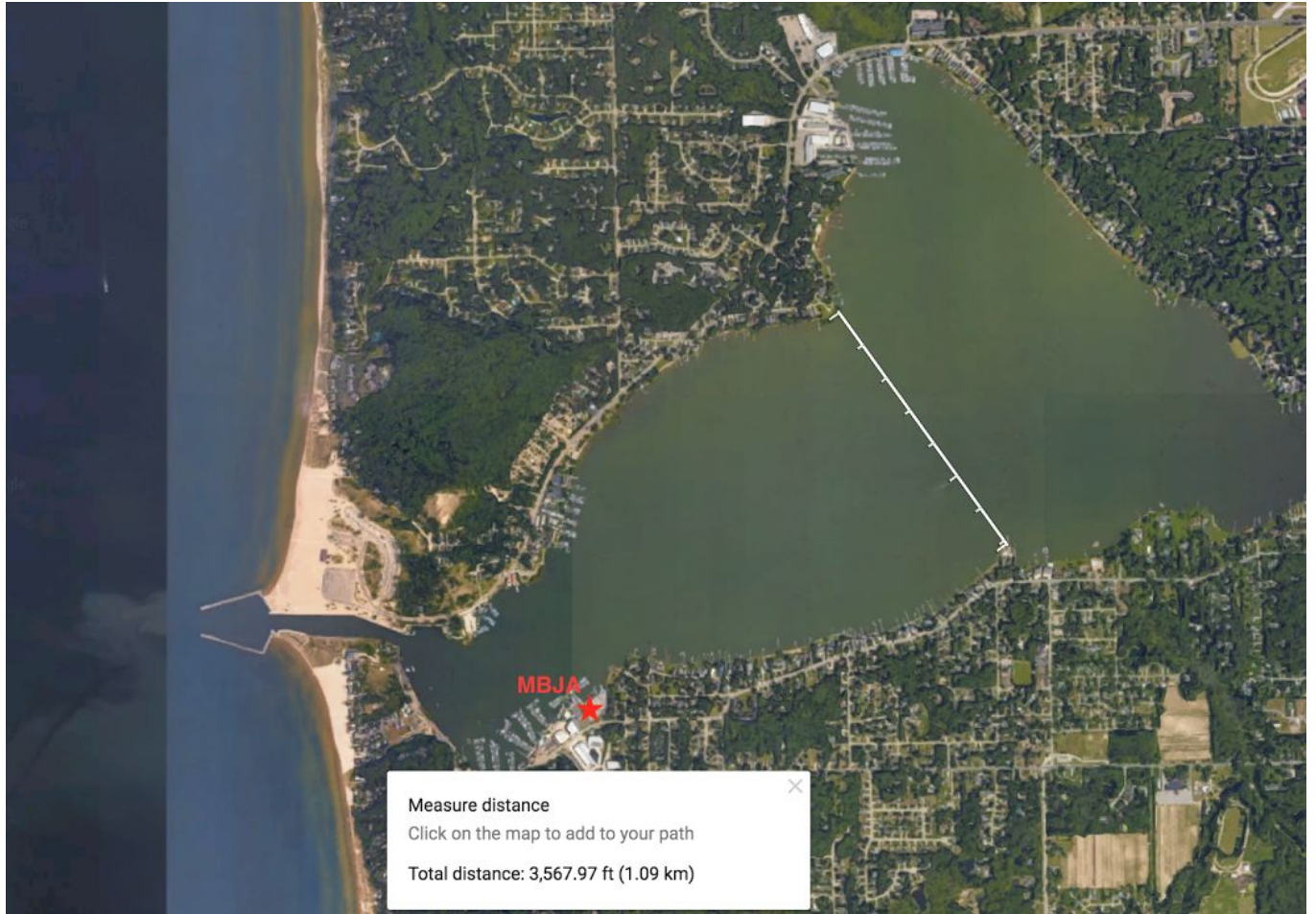
- a. Closest Airport: GRR - Gerald R. Ford International Airport in Grand Rapids, MI
  - i. Distance: 45 minutes from MBYC, 40 miles each way.
  - ii. Major Airlines: American, United, Delta, Southwest, Allegiant, etc.
  - iii. Direct Flight Options: Various, from most major US cities. Please see this [link](#).
- b. Other area airports:
  - i. Chicago - MDW or ORD
    1. Distance: approx. 3hrs each way, 150-170 miles
    2. Why? Often lower cost (~50\$ more on average if flying to GRR)
    3. Major airports with major airlines (mostly United and American)
  - ii. Detroit - DTW

1. Distance: approx. 3hrs each way each way, 186 miles
    2. Why? Often lower cost (~50\$ more on average if flying into GRR)
    3. Major airport, with major airlines (mostly Delta)
  - c. Driving
    - i. MBYC is located less than 10 miles from a major interstate, I-196.
    - ii. Very central location in regards to the nation: in the South West of Michigan, North-Midwest of the Nation.
    - iii. For driving directions, feel free to use the following address: 2157 South Shore Drive, Macatawa, MI 49434.
5. Officials
  - a. Hope College, GVSU, and MBYC have an extensive list of race officials (judges, PROs, etc.) who have been supporters of our program in the past. The probable race officials for this event are Barb and Roger Gamache or Jack and Linda Knoblauch.
6. Shipping Containers & Boat Storage
  - a. Very large paved parking lot at sailing location with clear and easy access to boat launches. Due to time of season, parking lot will be 90% empty, allowing for a large amount of space open for the event. Please see attached images.
  - b. Boat Storage will be permitted overnight, safety in the area is high. There have not been any issues with thefts in years, located in a tight-community with multiple members homes surrounding the club. There is a large marina next door that has full-time security; and responds to any issues.
7. Expected Weather
  - a. Temperature: The month of November is characterized by *rapidly falling* daily high temperatures, with daily highs decreasing from 54°F to 42°F over the course of the month, exceeding 65°F or dropping below 32°F only one day in ten.
  - b. Wind Conditions: Over the course of November typical wind speeds vary from 1 mph to 17 mph (light air to moderate breeze), rarely exceeding 25 mph (strong breeze). The *highest* average wind speed of 10 mph (gentle breeze) occurs around November 23, at which time the average daily maximum wind speed is 17 mph (moderate breeze). The *lowest* average wind speed of 9 mph (gentle breeze) occurs around November 1, at which time the average daily maximum wind speed is 16 mph (moderate breeze).
  - c. Precipitation: The probability that precipitation will be observed at this location varies throughout the month. Precipitation is most likely around November 30, occurring in 60% of days. Precipitation is least likely around November 1, occurring in 49% of days.

For more information, please contact the Hope College Regatta Chair Libby Reeg at [elizabeth.reeg@hope.edu](mailto:elizabeth.reeg@hope.edu) or the GVSU Commodore Nick Zomer at [zomern@mail.gvsu.edu](mailto:zomern@mail.gvsu.edu). Thank you for your consideration.



Macatawa Bay Yacht Club



Race course: Lake Macatawa or tow out to Lake Michigan